

Flail mower RBML 100/115/130
 Microtractor 15 - 45 HP
 with power grip 540 tr/min

Polyvalent Crushing
15 - 45 HP



Working width 100, 115 and 130 cm

Attelage arrière 3 points cat.1

Delivered with cardan shaft

Gearbox with freewheel

3 positions offset, **0 – 5 - 10 cm**

Y - knives width 40 mm thickness 5 mm

Cutting height adjustable from -1.5 to 11cm depending on knife type (Y, hammer, paddles or scarificator).

The advantages :

Substantial fuel savings due to the rotor design

Rotor with helical position: *even drive without effort for optimal crush. Big rotor tube : cutting rigidity and inertia, electronic balancing after assembly of knives. Reduced energy consumption and **CO2-emission***

High rotation speed: *rotation 2500 tr/min, cutting speed of 42m/s for a perfect cut and crush*

System to avoid grass jam: *no risk of grass winding around the roll*

Curved chassis: *the chassis form and the particular disposition of the back roll optimize the ventilation, ejection and self-cleaning of the roll*

Large opening: *allows to swallow the vegetation without flatten*

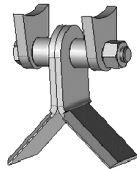
Drive: 2 trapezoidal belts, adjustable tension can be controlled easily

Security, ergonomic: lateral deflectors adjustable, front flaps anti-projection, lifting eye in the centre of gravity for handling

Lubrication accessible without disassembly. Bearing and lubricators protected against impacts or cutting rejection

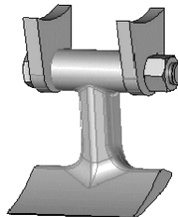
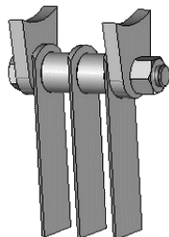
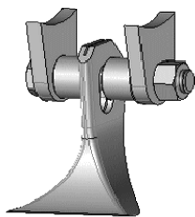
	(CV)	Number of tools			Overall dimensions	Weight (kg)
		"Y"	Paddles Hammers	Scarificator Knives	L x l x h (cm)	
RBML100	15/30	32	16	48	85 x 117 x 76	155
RBML115	20/35	40	20	60	85 x 132 x 76	165
RBML130	20/45	44	22	66	85 x 147 x 76	175

Serial assembly with Y-knives

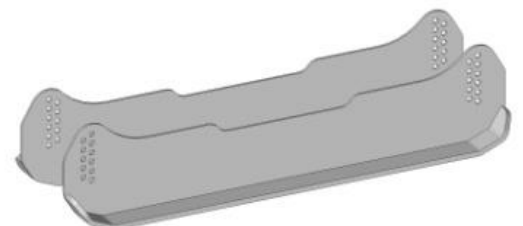


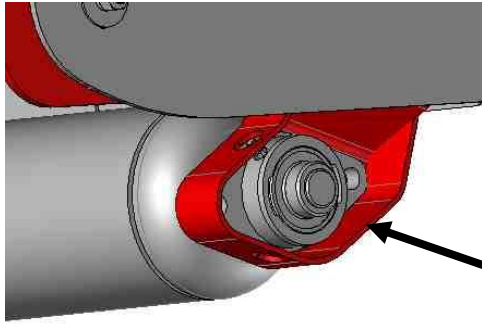
Options :

Assembly with paddles, scarificator knives or hammers



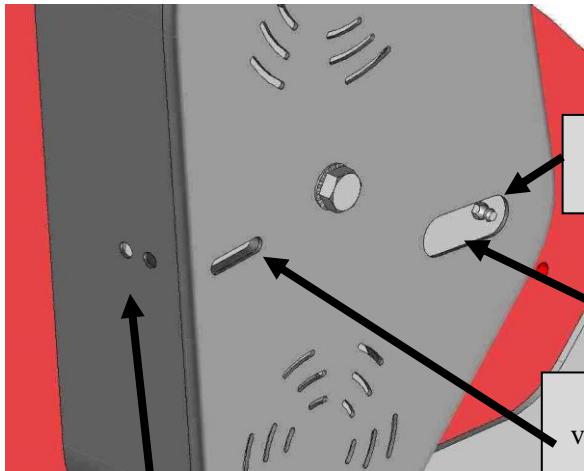
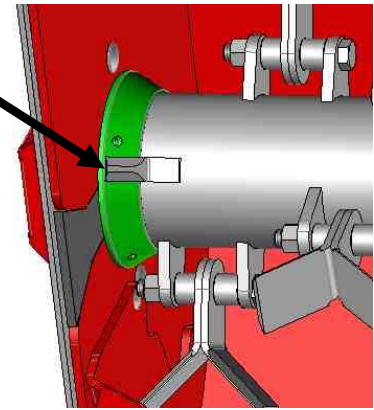
Bases





Back roll:
Bearings and
lubrificators
protected

Mud scraper on
rotor to avoid
grass jam



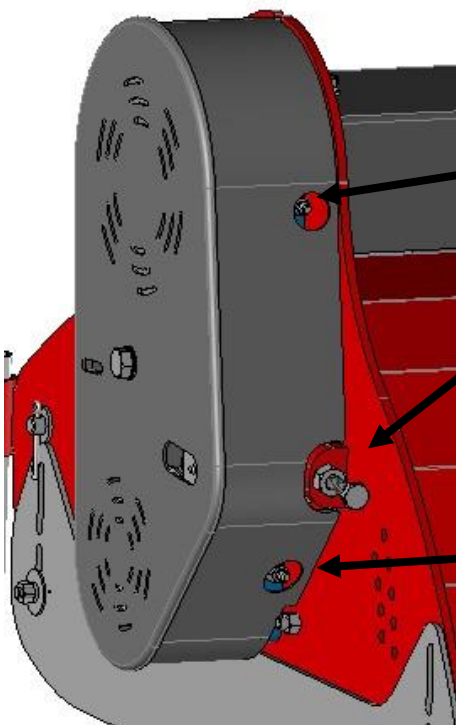
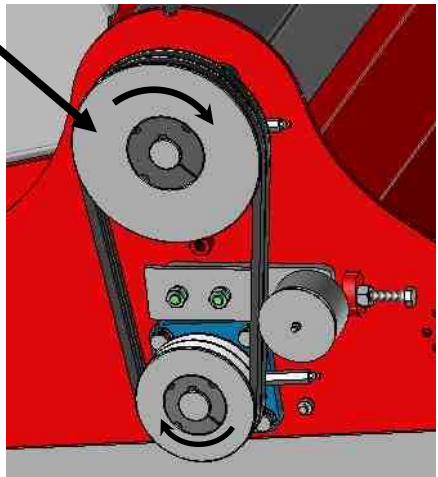
Lubrification
accessible

Anti-intrusion
roll fairing

Light to
visualize the
tension

Opening to press belts with
screw driver

Assembly
poulley eccentric
ring + keyway



Lubrification
accessible

Idler
bearing
accessible

